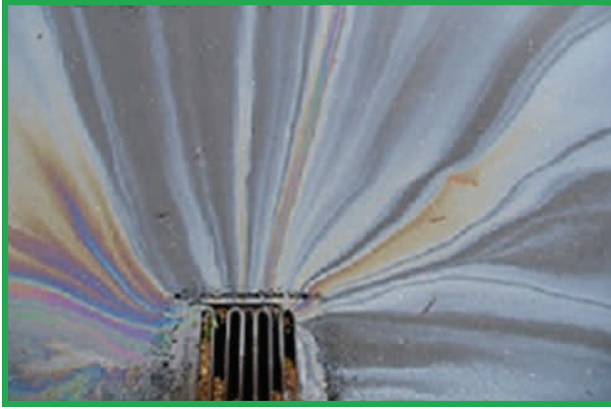


The Headwaters of Your Lake or Stream



Storm drains are direct conduits to the nearest surface water body. They do not connect to sewage treatment plants.

To protect your water and drinking water supply:

Properly dispose of hazardous materials at a household hazardous waste collection day.

Pick up pet waste, dispose of it in the trash.

Inspect the septic system annually, pump out the tank every 3-5 years.

Check vehicles for leaks, keep well maintained.

Take vehicles to a commercial car wash.

Leave grass clippings on the lawn: compost yard waste.

Use mulch to suppress weeds instead of herbicides.

Sweep up debris instead of washing the driveway.

Ontario-Wayne Stormwater Coalition Members

Town of Victor
Town of Farmington
Town of Macedon
Town of Ontario
Town of Walworth
Village of Victor

Wayne County Highway Department
Ontario County Highway Department
Ontario County Soil and Water Conservation District
Wayne County Soil and Water Conservation District



<http://www.owsc.org>

For more information, contact:

Ontario County SWCD
480 North Main Street
Canandaigua NY 14424

585-396-1450

Illicit Discharges: Detection and Elimination

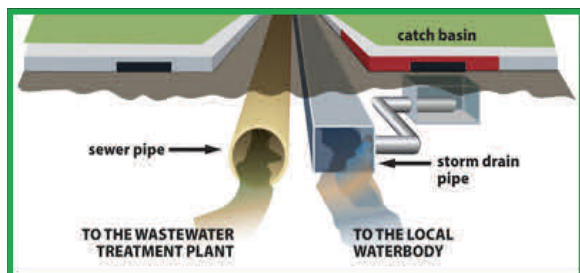


Ontario-Wayne
Stormwater Coalition

*Protecting Water
Preventing Pollution*

ILLICIT DISCHARGES can carry high levels of pollutants, such as heavy metals, toxics, oil, grease, solvents, pet waste, litter, nutrients, sediments and pathogens to receiving streams.

The contamination endangers public health, drinking water sources, surface water, groundwater and soils.



ILLICIT DISCHARGES MAY ENTER STORM DRAINS, ROAD DITCHES OR STREAMS THROUGH DIRECT OR INDIRECT CONNECTIONS SUCH AS:

- Cross-connection of sewer & storm drains
- Uncontrolled sediment from construction
- Dumping of yard waste or pet waste
- Dumping RV sewage tanks
- Landscaping
- Blowing grass or leaves to storm drains
- Vehicle washing
- Vehicle fueling
- Vehicle maintenance or repair
- Dumping fats, oils, greases
- Dumping paint or paint thinner
- Leaking septic systems
- Road accidents and spills
- Floor drains and sump pumps
- Swimming pool or spa discharges
- Power washing of parking lots or buildings
- Leaking dumpsters
- Acid washing of boats

THE FOLLOWING ARE OFTEN INDICATORS OF AN ILLICIT DISCHARGE:

- 1. Foam:** indicator of upstream vehicle washing activities, or an illicit discharge.
- 2. Oil sheen:** result of a leak or spill.
- 3. Cloudiness:** indicator of suspended solids such as dust, ash, powdered chemicals and ground-up materials.
- 4. Color or odor:** Indicator of raw materials, chemicals, or sewage.
- 5. Excessive sediment:** indicator of disturbed earth of other unpaved areas lacking adequate erosion control measures.
- 6. Sanitary waste and optical enhancers** (fluorescent dyes added to laundry detergent): indicator of the cross-connection of a sewer service.
- 7. Orange staining:** indicator of high mineral concentrations



REPORTS BY RESIDENTS and other users of a water body can be effective tools in identifying the presence of illicit discharges and ensuring the damage does not continue.



Illicit discharges should be reported to DEC Environmental Conservation Police. To report polluting complaints to a DEC dispatcher, call **1-844-DEC-ECOS** (**1-844-332-3267**)

They are open 24/7.

You may also contact your local Highway or Street Department, or the Soil and Water Conservation District in your county for assistance if you identify or suspect an illicit discharge.

